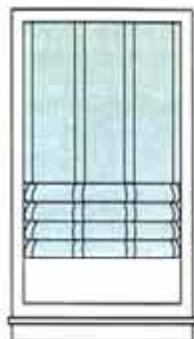


How To Make Roman Shades

The popular Roman Shade hangs flat, but pleats up accordion style in horizontal folds. Choose a firmly woven fabric; the Roman Shade is a perfect way to show off a graphic print fabric. You may want to add a layer of lining for a smoother hanging, more energy efficient shade.



You will need:

- Muslin or paper to make pattern for shade width
- Fabric-medium weight, firmly woven
- Conso Roman Shade Ring Tape #11068
- Conso Fastac[®] Tape #11982
- Conso #11603 Nylon Braided Cord
- Piece of board equal to width of shade approx 1" thick x 2" deep
- Angle irons of proper size to support board
- Metal 1/4" rod-cut to width of shade-or decorative rod
- Eye screws-one for each tape
- Small awning cleat
- Thread

Plan your shade

The Roman shade can be mounted inside or outside of the window frame. Measure the width and length of the area you want to cover with your shade. Then add 2" to your width measurement to allow for side hems. And add at least 5" to your length measurement to allow for top and bottom hems.

The bottom hem of the shade can be straight, as shown, or detailed with a scalloped or decorative edge. Allow extra fabric if you want a decorative edge.

NOTE: The success of a Roman Shade depends partially on the shade being a perfect rectangle. Take special care that corners are square and sides are parallel.

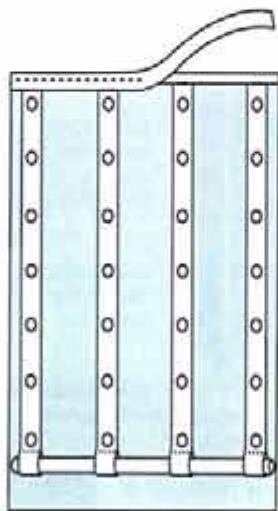
Cutting fabric

Cut your fabric according to the measurements you just made (don't forget to allow for hems). Cut Roman Shade Ring Tape 3" longer than the point where you have planned the top of your bottom hem to be. If needed, sew widths of fabric together. Keep in mind that you should have a row of rings behind any seams.

Instructions

1. Begin by turning 1" side hems to wrong side of fabric. Sew or iron Roman Shade Tape over the side hem. This lets you finish the side edges and apply the ring tape at the same time.

2. Continue sewing or ironing strips across back of curtain, spaced evenly and at intervals of no more than 10". (Make paper pattern marking in pencil just where your tapes will be placed.) We suggest using your zipper foot for ease in sewing the edges of the ring tape. Sew or iron tapes down as far as where the top of your bottom hem will be; let excess tape hang loose for making rod pockets. Be sure rings on each tape strip are parallel.



3. Turn up excess tape strips at bottom and sew or iron into loops for inserting rod. Now make your bottom hem, plain or decoratively trimmed. (For another type of hem, you can make loops of decorative braid and insert a rod through them.) At the top turn down 1/2" hem to wrong side of fabric; sew loop side of Fastac[®] directly over this hem. Insert fabric covered rod into loops at bottom hem and tack rod firmly into place.

See installation instructions on other side.

Look for these fine Conso[®] workroom supplies.

For an alternative to sewing, try Conso's Iron-On Drapery Tapes, Trimmings and Hem-N-Trim adhesive tape.

Roman Shade Tape



Style 11068 & 31068

Polyester, 1/2" wide, 5" ring spacing. Automatically spaces rings when sewn to the back of Roman and Balloon shades.

Nylon Braided Cord



Style 11602, 11603 & 11604

Durable lightweight nylon cord for raising and lowering shades.

Conso Fastac[®]



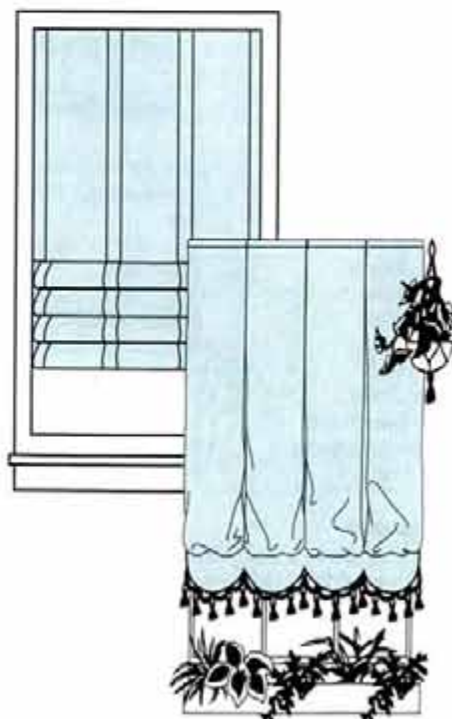
Style 11982 & 11983

Nylon mushroom hook and loop fastener, 1/2" wide. White.



How to make...

Roman Shades & Balloon Shades



For iron-on instructions of all Conso drapery tapes see brochure #505.

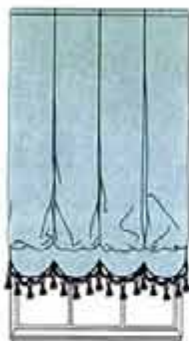
©2001 Conso Products Company
85 South St., West Warren, MA 01992 USA
Form #303.2/06

Conso Roman Shade Tape
and Nylon Braided Cord



How To Make Balloon Shades

The Balloon Shade falls from deep inverted pleats to form soft billows of fabric at the lower edge of the shade, just above the hem. The Balloon Shade is raised and lowered by cords strung through rings on the back of the shade. Conso Roman Shade Tape makes the balloon shade easy to make and easy to operate. Choose a soft but firmly woven fabric. A touch of trim will give your shade additional color and design.



You will need:

- Muslin or paper to make pattern for shade width
- Fabric-soft type, light to medium weight
- Conso Roman Shade Ring Tape #11068
- Conso Fastac[®] Tape #11982
- Conso #11603 Nylon Braided Cord
- Suitable Conso trim for bottom hem

- Piece of board equal to width of shade approx 1" thick x 2' deep
- Angle irons of proper size to support board
- Metal 3/4" rod-cut to width of shade-or decorative rod
- Eye screws-one for each tape
- Small awning cleat
- Thread
- Conso Hem-N-Trim #10705, #10706-for hemming

Plan your shade

In order to estimate the amount of fabric you'll need, plan your shade on paper. A Balloon Shade can be hung either inside or outside the window frame. Determine which placement you prefer, then measure carefully with a steel tape measure.

Finished width _____

Finished length _____

Size of balloon panels. Divide the finished width of the shade by the number of balloon panels you wish to have. This is the width of each panel. (If your finished width is 36" and you want 4 panels, each panel would be 9" wide.)

Pleats. Next, determine the width of the box pleats you will stitch or iron into the back of the shade (9" to 12" depending on how full a look you prefer). Multiply the number of balloon panels by the width of box pleats. Add this number to the width of the finished shade plus 2" for side hem and seams. This is the **total width** of fabric you will need.

Total fabric length. To determine the **total length** of the shade itself, add 12" to the finished length (10" for the beginning balloon effect plus 1" for attaching hem and 1" for top hem). Decorative hem shown requires additional 13" (double 6" hem plus 1" for attaching).

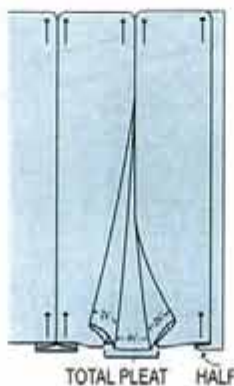
Amount of fabric. To determine the number of widths of fabric needed, divide the **total width** by the fabric width. Once you know the number of fabric widths, you can figure out how much yardage you'll need. Multiply the **total length** by the number of fabric widths and divide by 36". If you are working with a patterned fabric, allow extra fabric to match pattern repeat.

Make pattern. Make a 6" deep paper or muslin pattern the total width of the fabric you will need. On pattern, mark all pleat fold lines, mark center of each pleat where tape will be sewn or ironed. There will be a half pleat at each side of the shade, allow 1/2" for each side hem. Any seam lines should fall within a pleat. The paper pattern will help you determine seam placement.

Instructions

1. Seam fabric widths together. Transfer pattern marks to fabric with pins or dress makers carbon (on wrong side) at top and bottom of shade.

2. Working on a large flat surface, fold box pleats into place according to pattern. It is easiest to work with the right side of the fabric up. Make a half pleat at each side. Double check measurements and press pleat folds.



3. On wrong side, stitch pleat folds along edges.



4. Stitch or iron Roman Shade Tape down the center back of each pleat and covering 1/2" hems at side pleats. Roman Shade Tape should be measured to have bottom ring of each tape placed about 2" above bottom edge of shade before hem. Be sure rings of all tapes are parallel.

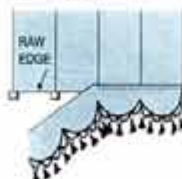
5. Repleat and press. Now stitch along top and bottom edges to hold pleats in position to exact width.



6. Turn 1/2" top edge to back and sew loop side of Fastac[®] tape over hem. (Suggest 14 to 16 needle for this thickness.)

7. Sew rod pocket loops 1/2" above bottom edge at each ring tape.

8. For decorative hem. Fold 13" strip of fabric in half with right sides facing, mark scallops to match size of space between pleats. A salad or dinner plate is an excellent pattern for your scallops. Sew or iron sides and scallop outlines. Turn to right side, press. Attach decorative hem to bottom of shade, keeping rod pockets free in back of hem. If desired, apply trim to scallops.



Pulcords and Installation

1. Attach pulcords. To operate shade, each ring tape needs a pulcord which, when pulled in unison, raises shade. To measure, start at one side of shade. Cut separate lengths of cord long enough to tie firmly to bottom ring of each tape and thread up through each ring to top, go across shade, and half-way down to

sill on one side. Cords will vary in length. Tie each cord firmly to the bottom ring of each tape and thread to top.

2. Mounting board. The usual is about 1" thick by 2" deep, installed as a miniature shelf inside recess of window frame, on moulding or on wall, using angle irons for support. Length of board is equal to the finished width of shade. Staple, tack or glue mushroom hook side of Fastac[®] tape along (2" side) of board. Finished shade will be attached here.

3. Attach angle irons to board in proper position for window installation.

4. At position of each tape at the top edge of shade, mark underside of board and insert eye screws to accept cords across center of board at these exact points.

5. Attach shade to board by pressing loop Fastac[®] at shade top to mushroom hook side on board.

6. Attach board to window.

7. Let shade hang to full length. Bring cords strung through rings up to board, and thread cords through each eye screw across the board to have all hang down on the one side.

8. Bottom rod. 3/4" metal rodding should be slipcovered, inserted through rod pocket loops, and tacked firmly to each loop to prevent slipping.

9. On the balloon shade, pull cords in unison to raise shade to sill which will form the beginning "balloon shir" from the extra fabric allowed in the length. When at proper position, knot all cords together outside last eye screw and cut off all cords except the one below knot. This one cord is used to raise and lower shade. **For Roman Shade** knot all cords together outside last eye screw and cut off all cords except the one below knot. This one cord is used to raise and lower shade.

10. Attach cleat to window frame at a convenient place on the side where cord hangs, around which cord is twisted to hold shade at height desired.

